

Show Particulars

Hours are 8 a.m.–4 p.m. on Friday and 8 a.m.–3 p.m. on Saturday. Attendance is by paid admission. Registered visitors can mingle freely among all exhibits both days. The visitor parking area is a field located just ¼ mile from the show entrance. This year, the live demonstration area will be located approximately ½ mile north of the static area and the pavilion/registration. Shuttle service is provided between the parking area and registration and between the static and live areas for those needing assistance.

Exhibit Setup

Live and static demo sites are available for setup at 8 a.m., Friday, August 19; pavilion spaces are available at 8 a.m., Monday, August 22. All exhibits must be in place by 6 p.m., Thursday, August 25. Exhibits must remain in place until 3 p.m., Saturday, August 27. Two forklifts will be provided to accommodate items no heavier than 6,000 pounds. Night security is provided August 19–28. Exhibit materials and equipment should be removed by 12 p.m. on Monday, August 29.

Furniture and Fixtures

Pavilion exhibitors are provided a table and two chairs for a 6x10' booth and two tables and four chairs for a 12x10' booth as part of the rental fee. For additional furniture, tent, generator or other needs, contact the official expo accessories provider directly: Outdoor Events, phone: 706-221-1900; fax: 706-221-1901; email: Carol@OutdoorEvents.com

Food and Beverages

A local non-profit group will dispense a wide assortment of food and beverages from a centrally located food court. With the exception of water, miniature candy pieces, peanuts, and popcorn, no food or beverages can be given away or sold at the site by exhibitors or their personnel. Live exhibitors, exclusively, will be allowed to serve food at their sites on Saturday only.

Added Value

Each exhibitor receives a free listing on the Mid-South Forestry Equipment Show website and in the Show Program provided exhibit space is reserved prior to publication deadlines.

Insurance

Exhibitors must provide proof of liability insurance before occupying exhibit space. Pavilion and static exhibitors must have \$500,000 minimum coverage; live exhibitors must have \$1 million minimum coverage. Proof of insurance is due by July 26, 2016.

Exhibitor Staff Pre-registration

Limited complimentary show admission for exhibitor staff is included as part of the exhibitor site fee. Pavilion exhibitors will receive two badges per booth; static exhibitors will receive four badges per site; and live exhibitors will receive ten badges per site. The *Exhibitor Staff Pre-registration Form* must be received by July 26, 2016.

Vehicular Traffic During Show

In the interest of safety and given liability concerns, ATVs, golf carts, and/or vehicles are not allowed to be driven inside the show gates during show hours. Expo management will have a limited number of ATVs on site to help exhibitors with pickup and delivery of supplies and materials.

Show Promotion and Exhibitor Activities

As a special event in which Hatton-Brown Publishers is involved, the Mid-South Forestry Equipment Show will gain national and regional promotion in *Timber Harvesting* and *Southern Loggin' Times* through advertising and editorial support. Exhibitors are asked to share planned activities such as contests, raffles, and the like with show staff in advance such that these may be included in show marketing efforts, to ensure consistency with show-sponsored events, and to allow for liability considerations.

MANDATORY SAFETY MEETING

Thursday, August 25, 4:00 p.m.

Food Court Tent

All exhibitors who plan to start or operate equipment must have a representative in attendance. Exhibitors must adhere to the highest safety standards and abide by rules established by the sponsor. Equipment demos must not endanger attendees or other exhibitors or cause unreasonable distraction. Expo officials reserve the right to order the shutdown and/or removal of any equipment or display that they deem unsafe or distracting.

Accommodations

The show has room blocks with the following hotels in Starkville. Be sure to check the show website for blocked rooms with other area hotels and for links to other lodging choices.

Starkville (7 miles from show site)

Comfort Suites	662-324-9595
Courtyard by Marriott	662-338-3116
Days Inn & Suites	662-324-5555
Hampton Inn	662-324-1333
Hilton Garden Inn	662-615-9664
Hotel Chester	866-325-5005
La Quinta Inn & Suites	662-270-4100
Microtel Inn & Suites	662-615-0700

Contact Us

The show staff is here to help you!

Show Manager

Misty T. Booth

Show Secretary

Gail Wilson

By Mail

Mid-South Forestry Equipment Show, Inc.
1594 Blackjack Road
Starkville, MS 39759

By Phone (7:30 a.m. – 4:30 p.m. Central)

662-325-2191

By Fax

662-325-1024

By Email

msfes@cfr.msstate.edu

Show Website

www.midsouthforestry.org



Friday & Saturday
August 26-27, 2016
Starkville, Mississippi

EXHIBITOR GUIDE

The Longest Running, Live, In-woods Equipment Demo in the Nation!

- Biennial show permanently located in the heart of the mid-South on the 8300-acre John W. Starr Memorial Forest
 - Easily accessible by four-lane highway
- Over 65 lodging choices within an hour drive (hotels, B&Bs, RV parks/campgrounds, casino-hotel and spa resort)
 - Two-day attendance has averaged 6000 individuals from multiple states for the past 10 years
- Variety of affordable exhibitor site options (pavilion booths, open/forested static sites, forested live operation sites)
 - Continuing education courses and family activities provided
 - Multitude of contests and prizes as well as Log-a-Load For Kids fundraising activities
 - Exhibitor exposure in Hatton-Brown and show publications/website
 - Experienced and accommodating show staff
- Support from Mississippi Forestry Association, Mississippi Loggers Association, and Mississippi State University
 - Mississippi Loggers Association banquet held onsite on Friday evening

Be a part of the Deep South's premier forestry show for 2016 as the Mid-South Forestry Equipment Show celebrates a proud history spanning over 30 years!

For the latest information, "log on" to the show website at
www.midsouthforestry.org

2016 EXHIBITOR SITE SELECTION MAP

Forested Live Site

1-Acre No-Harvest (LNH)

Primary Site = \$3990

Additional Adjacent Site = \$2790

In-woods sites designed specifically for those exhibitors who wish to operate machinery (such as chippers or grinders) but who are not demonstrating larger-scale timber harvesting operations. Sites are sparsely-timbered ranging from open to some standing trees.

2-Acre Harvest (L)

Primary Site = \$6590

1st Additional Adjacent Site = \$5290

2nd Additional Adjacent Site = \$3990

Mature Loblolly pine stand with sawtimber-sized trees. Gently sloping, low topography. Silty clay loam soils. Each site has at least 200 feet of road frontage.

Static Yard (S)

25x50 feet = \$1290

50x75 feet = \$1790

75x75 feet = \$2190








Pavilion Booths (P)

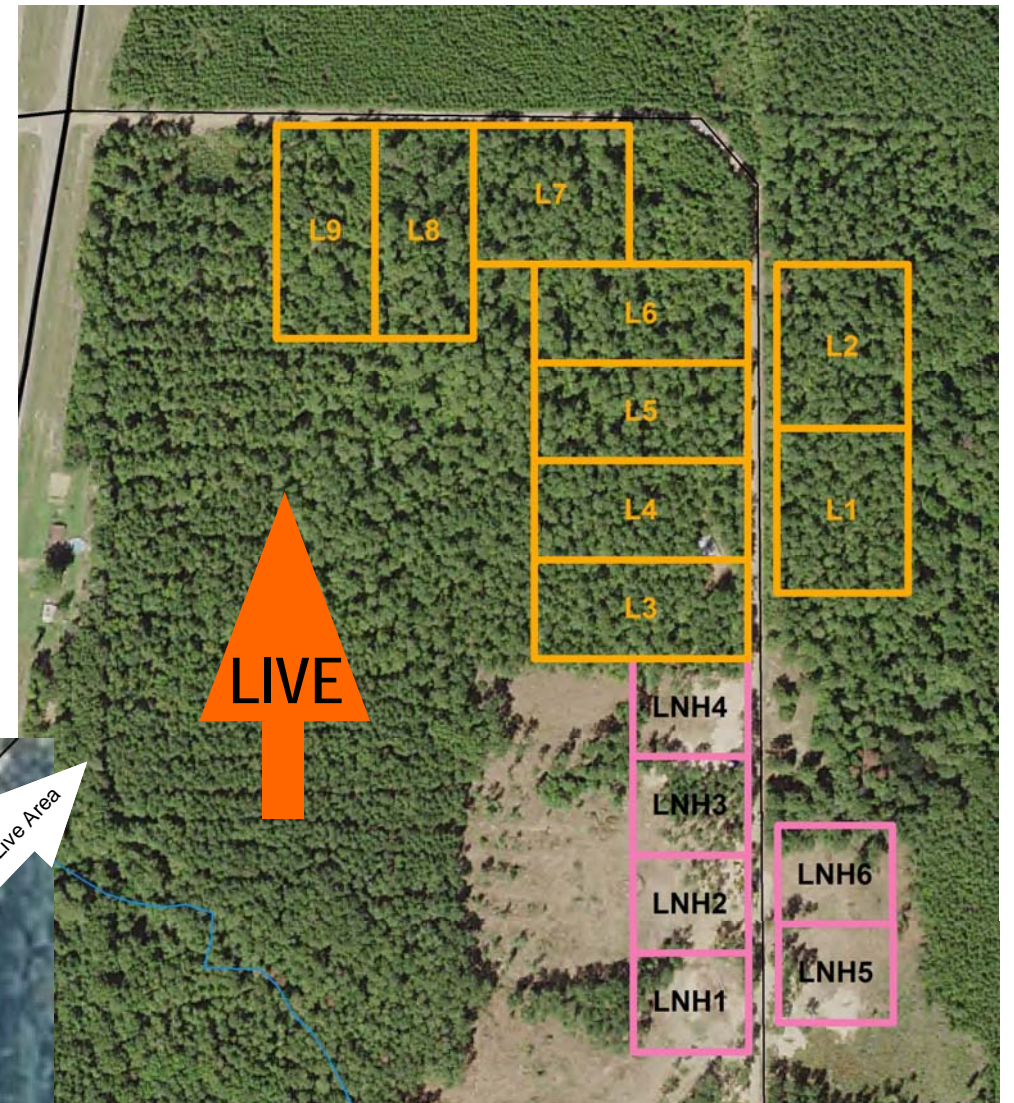
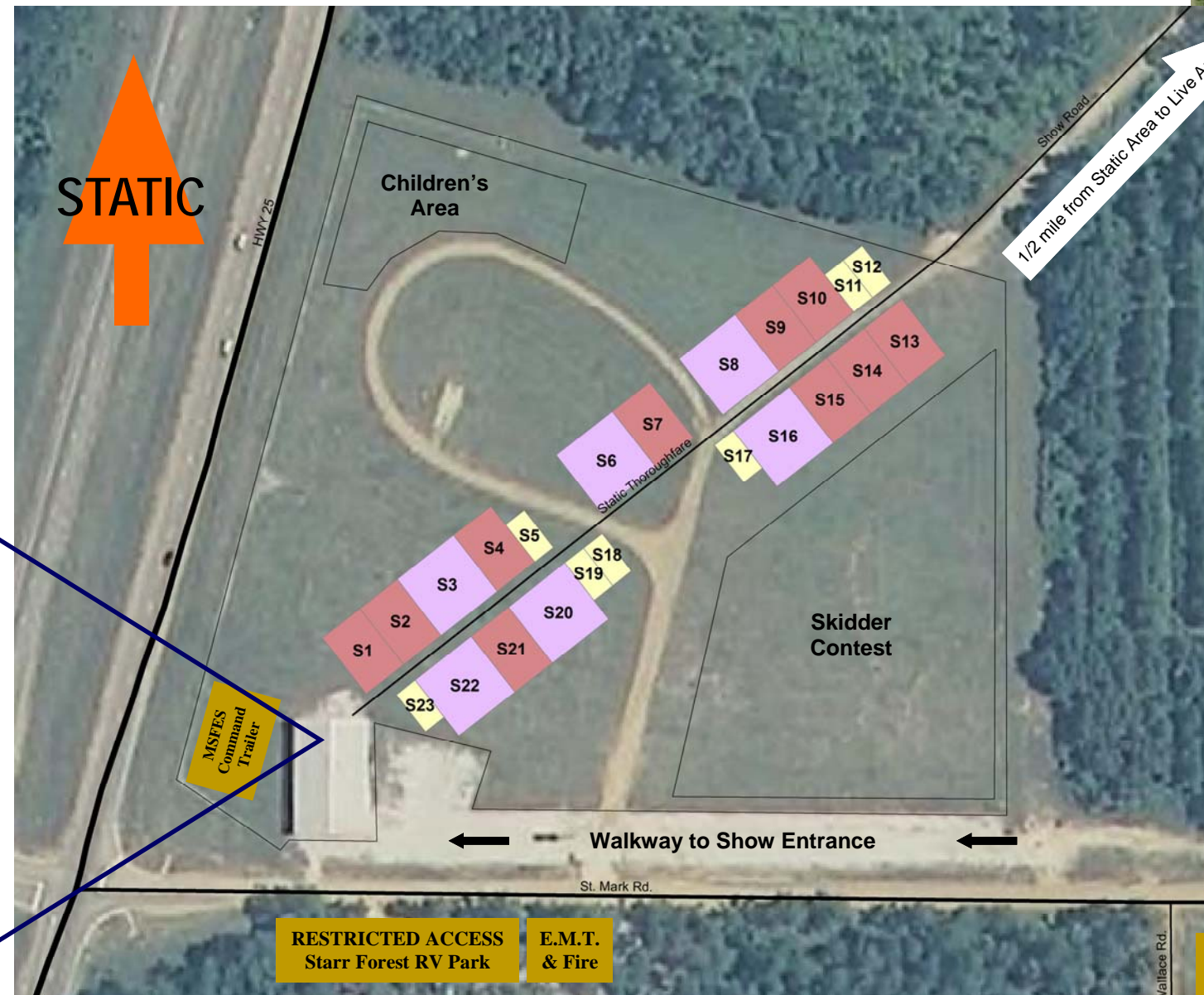
6x10 feet = \$450

12x10 feet = \$500

NOTICE: No exhibitor's equipment, tent, or other property may overrun the rented space without prior approval from show management. Exhibitors cannot "sublet" any portion of a site to another exhibitor. Live exhibitors must not demonstrate or display more than three brands of self-contained equipment on any given site. All spaces are available on a first come, first serve basis. Please check the show website for up-to-date availability of exhibitor sites.

Mid-South Forestry Equipment Show, Inc. is a nonprofit corporation organized to provide technology transfer from forestry and related equipment manufacturers to the forestry community. Minimized revenues are used exclusively to offset the costs of conducting the Show and to make Show improvements designed to achieve the educational outreach purpose of the corporation.

-  2 - Acre Live Harvest Site (L)
-  1 - Acre Live No Harvest Site (LNH)
-  75 x 75 Foot Static Site
-  50 x 75 Foot Static Site
-  25 x 50 Foot Static Site
-  12 x 10 Foot Pavilion Booth
-  6 x 10 Foot Pavilion Booth



VISITOR PARKING

RESTRICTED ACCESS
Starr Forest RV Park

E.M.T. & Fire