

FO 4313/6313
Spatial Technologies Laboratory 12
Creating Buffers for Map Features/Buffer Wizard

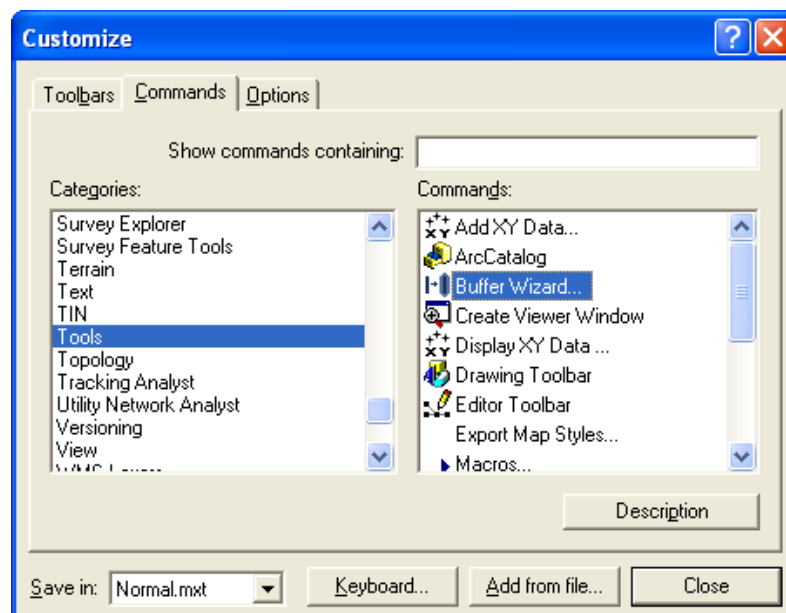
Lab Requirements

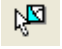
In this Lab, we will:

- Put a 20 meter buffer around the entire Noxubee River within your mapping area, and the portion of the stream south of Dorman Lake and east of Highway 25.
- Put a 10 meter buffer around Dorman Lake Road from Highway 25 to Dorman Lake
- Add a legend item to your final project map that gives acres in streams and road buffers.

Creating Buffers:

1. Bring in your **roads** and **streams** layers you created in the earlier labs
2. In order to enable the Buffer Wizard, select **Tools** from the top of the screen and select **Customize**. Tab to **Commands**. In the Categories window, scroll down and select **Tools**. In the Commands window, select **Buffer Wizard** and drag it to the top of the screen. You will be able to dock the Buffer Wizard next to **Help** in the Main Menu. Once you have docked the buffer wizard, click **Close** on the Customize window.



3. Make **streams** your active layer by clicking **Selection** in the lower-left corner of the screen. Uncheck the **roads layer** and leave the **streams layer** checked. Then tab back to **Display**.
4. Click the **Select Features** icon 
5. Hold down the shift key and select segments of the stream to be buffered based on the lab requirements listed above.
6. Click the **Buffer Wizard** icon. When the wizard dialog pops up make sure **features of a layer** is selected and that the **use only the selected features** box is checked and select the layer you want to buffer (roads or streams). Click **Next**.
7. There are a number of options available when creating buffers. You will be using the **at a specified distance** option to create your buffers. You can change the units of measure at the bottom of the screen. Set the distance to meet the Lab Requirements above. Click **next** to continue
8. Make sure that **Yes** is selected on the **dissolve barriers between** option. Also be sure to save your new layer with a correct **name** and in the right **place**, then select **finish**.
9. Once the streams buffer has been created, **Clear Selected Features** and follow these methods for the **Roads layer**.
10. Once both buffer layers have been created, use the previously learned methods to **calculate the acres** of the stream and road buffers using **XTOOLS**.