

MISSISSIPPI STATE UNIVERSITY

College of Forest Resources

2012 alumni newsletter

Photographs



Celebrating 150 years of the Landgrant University



DEAN'S comments

This year marks the 150th anniversary of the Morrill Land-Grant Act. This landmark legislation established the land-grant university system in 1862, and the outcome has been a remarkable success story for Mississippi and the nation. Over 100 educational institutions across the U.S. are land-grant institutions. The first Morrill Act was charged with the mission of teaching agriculture, military tactics, and the mechanic arts, as well as classical studies, so members of the working classes could obtain an education. The first Act provided grants of federal lands to each state for the establishment of a public higher education institution.

Our state and country have truly benefited from the investment in land-grant institutions. It is worthwhile to take a moment and reflect on our past accomplishments, and the 150th anniversary of the Morrill Land-Grant Act seems an appropriate time to make these reflections. The College of Forest Resources and the Forest and Wildlife Research Center epitomize the land-grant purposes: learning, research, and service. In this newsletter, we have touched on each of these areas and how we are serving the people of our state, region, and nation.

I have been privileged to work closely in all phases of the land-grant system as a student, technician, professor, and administrator. The opportunities I gained at Virginia Tech, the University of Tennessee, and MSU have allowed me to serve and see first-hand the impact of the land-grant system on people, communities, and development of our resources. Our land-grant research, teaching and Extension programs have provided for a more prosperous and better educated nation that has conserved our natural resources for future generations.

The College of Forest Resources and FWRC received level funding for the 2013 fiscal year. The economic recession has been difficult as we have reduced our budget 16% over the last three years. Currently, as I prepare the FY14 budget, we have asked for partial restoration of these cuts. Thank you to all those who have petitioned the legislature on our behalf. I know that many of you have helped in the past, and we are truly grateful for your continued support.

Late last year, the CFR Alumni Society sent a ballot of officers, collected alumni dues, and requested updated information. I am sure you will enjoy seeing the alumni news section and the many people who responded. We enjoy hearing from you, so please continue to send us your stories. You can also stay in touch through our Facebook page: search for College of Forest Resources, Mississippi State University.

Our enrollment continues to increase with a record number of undergraduate and graduate students this fall. Thank you for sending and encouraging your sons and daughters and outstanding students to attend CFR and MSU. Please give us their names so we can reach out to these prospective students.

Finally, we had a great crowd of alumni and friends at the Mid-South Forestry Equipment Show (5,500) and the CFR Homecoming Tailgate Reunion (400). If you could not make these events, I hope you will plan to attend the Homecoming Tailgate in 2013 and the Equipment Show in 2014.

It is an honor to serve as your Dean, and I hope to see you very soon.

George M. Hopper (botany 1975, forestry 1979)
Dean

2011 Alumni Fellow



Marion V. Cooley

The College of Forest Resources named Laurel, Miss. native Marion V. Cooley as fellow. A 1958 forest products graduate, he is now manager of Cooley Timberlands in Brookhaven, Miss. As a result of earning his degree from then-Mississippi State College, Cooley has enjoyed a lifelong career as a registered, certified forester and land surveyor. He has traveled extensively outside the United States, gaining knowledge of better forest practices as he held roles for two forestry industries. For over 50 years, Cooley has held membership in the Society of American Foresters and in the Mississippi Forestry Association. He is also a member of the Tree Farmers Association, owning property recognized as a "certified family forest."

2011 Alumnus of the Year

James A. Dubovsky

James A. Dubovsky is the Alumnus of the Year. Dubovsky holds master's and doctoral degrees from MSU in wildlife ecology in 1987 and 1990, respectively. Dubovsky has served as Regional Chief of the Migratory Bird Management Division of the U.S. Fish and Wildlife Service. In this position, Dubovsky was responsible for coordinating all migratory bird work within the 8 states of the Mountain-Prairie Region of western USA. In December 2010, Dubovsky was selected as the next Central Flyway Representative for USFWS. In Dubovsky's new position, he will coordinate with personnel of 10 states in the West and continue his work with various regional and national initiatives. He also is a Michigan State University graduate.



Become a fan of the CFR at www.facebook.com/pages/Starkville-MS/College-of-Forest-Resources-Mississippi-State-University/64929098323?ref=mf

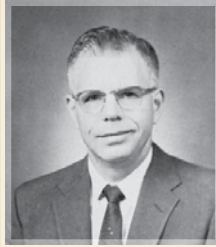
1954

Legislature created the School of Forestry within the College of Agriculture

1961

The School of Forestry becomes a separate entity from the College of Agriculture

Robert T. Clapp named Dean



1966

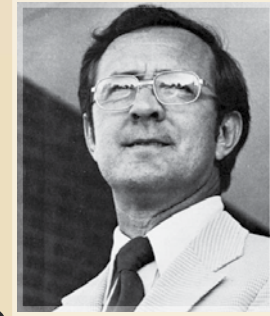
School of Forestry moves from Montgomery Hall to Dorman Hall

1968

Department of Wildlife Management established and approved to offer master's degrees



Department of Forestry authorized to offer master's degrees



1974

R. Rodney Foil named Dean

1975

Department of Wood Science and Technology approved to offer bachelor's degrees

College of Forest Resources Time line

1955

First two professional forestry degrees awarded

8,000 acres of land given to the university for a school forest

1964

Forest Products Utilization Laboratory authorized by Mississippi Legislature

1967

School of Forestry renamed School of Forest Resources

Forestry undergraduate education program accredited by Society of American Foresters

1969

Department of Wildlife Management renamed Department of Wildlife and Fisheries



Department of Wood Science and Technology established and approved to offer master's degrees



1978

J. Charles Lee named Dean

Cooperative Fish and Wildlife Research unit established

School forest named the John W. Starr Memorial Forest



1980

First students enrolled in doctoral program in Forestry.

Wildlife and Fisheries' research and educational facility created.

1987

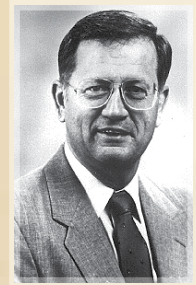
Legislature created the Furniture Research Unit

1994

Legislature combined the research programs of forest products, forestry, and wildlife and fisheries into a newly created Forest and Wildlife Research Center

1995

John Gunter named Dean



2001

G. Sam Foster named Dean



The Institute of Furniture Manufacturing and Management created

2008

James C. Kennedy Endowed Chair in Waterfowl & Wetlands Conservation

1979

IHL approved the Ph.D. program in forest resources

Graduate program in wildlife ecology accredited by the Southeast section of the Wildlife Society



1983

Forest products laboratory renamed R.T. Clapp Forest Products Utilization Laboratory

Warren S. Thompson named Dean



1993

Departments of Forestry, Wildlife and Fisheries, and the Office of the Dean move from Dorman Hall into new facility, later named Thompson Hall



1989

Department of Wood Science and Technology renamed Department of Forest Products

1997

Department of Wildlife and Fisheries approved to offer bachelor's degrees

1996

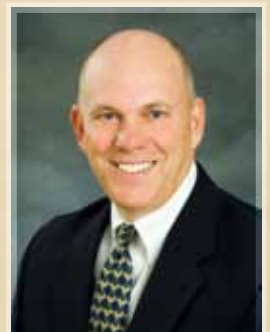
School of Forest Resources renamed College of Forest Resources

2009

Department of Wildlife and Fisheries renamed Department of Wildlife, Fisheries and Aquaculture

2005

George M. Hopper named Dean



celebrating their **LEGACY**

In the last year, the College of Forest Resources has lost two beloved employees. Charles E. Burkhardt died September 9, 2011. Dr. Robert “Bob” Parker died May 28, 2012. As a fitting tribute to these long-time employees, the CFR would like to share their legacies, spoken through students and friends.

Robert “Bob” Parker

*Retired Professor Emeritus in the
Department of Forestry*



“ It was an honor to have been taught by Dr. Parker. As I progress in my career as a forester I will always remember the lessons I learned from Dr. Parker. He truly was a great man, and his legacy will live on through his sons and his students. ~Kate Brown (forestry 2011)

Dr. Parker was always such a joy to be around. He never once passed by in the hallway without a warm and friendly hello. He always kept an upbeat and positive attitude which I believe transpired to many of his students. He was one of the best instructors and mentors at the CFR. Always straightforward and very fair to his students. ~Michael and Ryann Campbell (forestry 2009)

Dr. Parker was more than a professor; he was a role model who reflected the values which help make America great. Dr. Parker was straightforward with his opinions, which is a wonderful anomaly in this day. I consider Dr. Parker to be one of the top three most influential professors who helped shape my career/path in life. ~David W. Carraway (forestry 2009)

Dr. Parker was one of my favorite professors at MSU. Dr. Parker was a very fair and straightforward professor that challenged you and truly cared about his students. ~Jason Cooley (forestry 2001)

Dr. Parker sure was a great teacher and will be missed. ~Tom McCabe (forestry 1995)

”

Charles E. Burkhardt

forest supervisor and alumnus (forestry 1980)



“ Charles' influence is visible everywhere. Charles often told me, 'I'll take care of it,' and he was a man of his word. There was a comfort in knowing that if Charles was involved, things were going to be done right. ~George Hopper (forestry 1979)

Working for Charles wasn't a job, it was a lifestyle. He lived to work and worked to live. ~Misty Booth (forestry 1999)

Charles was a good event organizer and followed up well. He knew when to press and when to back off, when to talk and when to keep quiet. ~DK Knight, Hatton-Brown Publishers and Equipment Show sponsor and board member

Charles would go out of his way to help loggers. ~Cecil Johnson, Mississippi Loggers Association

Charles will be greatly missed by all the forestry/logging community who knew and worked with him at the Forestry Trade Shows. ~Berry Johnson, John Deere

I met Charles during summer camp in '79 and he has been in and out of my life ever since. Nothing will be the same at [MSU] forestry without him. ~ Mary Grace Chambers (forestry 1981)

Charles went out of his way to help students. If he knew of a student with a financial need, he would seek them out to give them a job. ~Tedrick Ratcliff (forestry 2007)

”

Charles E. Burkhardt

The **Charles E. Burkhardt Memorial Fund** provides assistance for students to intern on the John W. Starr Memorial Forest. Burkhardt served as forest supervisor for 31 years on the MSU forest. Under his tenure, additional land was secured through the MSU Foundation as part of the Bulldog Forest. Today, over 20,000 acres are managed by the College of Forest Resources, providing scholarships and assistantships for students and faculty.

Robert "Bob" Parker

The **Robert Parker Summer Camp Fund** provides assistance to students to participate in the best in-the-field experience for students. It is one of a few remaining in the nation. Challenging economic times have caused many schools to drop their field experience programs. The cost of summer camp is about \$1,932 for resident students. The College of Forest Resources would like to give at least two scholarships each summer to outstanding students who exhibit leadership with their peers, work cooperatively with and assist their crew members with field assignments, exhibit strong professional and ethical qualities, have a financial need, and show academic and professional improvement during the summer field session.

If you are interested in supporting the **Charles E. Burkhardt Memorial Fund** or the **Robert Parker Summer Camp Fund**, contact Jeff Little at 662.325.8151 or jlittle@cfr.msstate.edu.

Alumnus establishes a legacy for longleaf pine

Longleaf pine forest once covered the southern landscape. The tall, stately pine covered an estimated 90 million acres with a forest floor of grasses and flowering shrubs in a manicured, park-like appearance.

Frequent natural fire created and maintained the landscape in which longleaf pine flourish, along with a diverse array of plants and animals. Over 300 plant and animal species occur in the unique fire-dependent ecosystem created in a longleaf pine forest.

This particular pine species is resistant to high-wind events and often grows on dry sandy ridges where other trees will not survive. Commercial forestry and urban development have reduced the size of the once expansive longleaf pine forest.

Recognizing the value of longleaf pine forests, the U.S. Department of Agriculture recently announced 20 restoration projects set to begin in 2012, including a large effort in the DeSoto National Forest and Camp Shelby.

A recent gift by Davis Mortensen will allow Mississippi State University to join in the restoration efforts. Mortensen is an alumnus, longtime contributor and Mississippi native.

For Mortensen, the gift is a natural outpouring of his love for natural resources, students and Camp Shelby, the largest state-owned military training center in the U.S.

Mortensen spent a 35-year career managing 5.6 million acres of timberland for Georgia-Pacific Corporation. He understands the importance of responsible timber management and conservation efforts. He also knows the necessity of educating students to be good stewards of the land.



Left to right: Susan Hollandsworth, The Nature Conservancy; Colonel William B. "Brad" Smith, Commander, Camp Shelby; Davis Mortensen; Dean George Hopper; Gregory A. Bohach, Vice President, Division of Agriculture, Forestry and Veterinary Medicine.

However, the expense associated with obtaining a college education can be overwhelming.

"I attended MSU on the G.I. Bill, and had it not been for that, I would have been unable to attend college due to the cost. Giving back so that students have a means to pursue a college education is very important to me," said Mortensen, who resides in Greensboro, Ga.

When the property adjoining Camp Shelby military base became available, Mortensen realized that he could provide an asset to the university while helping restore the pristine forests of long ago at a familiar and special location.

Mortensen has fond memories of the time he spent on the Camp Shelby base. He went through basic training there as a member of the Mississippi National Guard 631st Field Artillery Battalion, headquartered in Hattiesburg. A native of nearby Moss Point, he served two years in the Army prior to attending community college and later enrolling at Mississippi State.

Mortensen's gift enabled the college to acquire a 352-acre property which is classified as an ACUB, or Army Compatible Use Buffer. In the ACUB program, the U.S. Department of Defense partners with non-federal programs or private organizations to establish buffers around military installations.

These buffers proactively limit encroachment while allowing Camp Shelby to maximize the land inside the installation to support its mission.

"This is one of a few privately-funded ACUB sites in the state of Mississippi," said George Hopper, Dean of the College of Forest Resources. "Our college is pleased to be in a position to restore this land to longleaf pine, manage the timber resources, and protect the wildlife species dependent on this habitat."

Threatened or endangered wildlife species including the gopher tortoise, red-cockaded woodpecker, and black pine snake are dependent on the longleaf pine ecosystem, Hopper added.

Other species, including bobwhite quail, ground-nesting birds, turkey and white-tailed deer also inhabit the longleaf pine ecosystem.

"This site will dramatically impact the students, faculty and programs of the university, particularly in our college," Hopper said.

Students will be able to use the property as a living laboratory, gaining a better understanding of longleaf pine management and the wildlife which it supports. Timber harvest from the property will fund scholarships, Hopper added.

The ACUB property will be named the Davis and Ann Mortensen Forest and will become one of the properties in the Bulldog Forest. The Nature Conservancy will hold a working conservation easement on the Mortensen Forest, which allows for compatible uses such as timber production and harvest.



Zack Parisa (forestry 2006)

FOREST MANAGEMENT from a



Point of View

Developing software to enhance forest management is where Zack Parisa, a 2006 Mississippi State graduate, has positioned himself, at the forefront of burgeoning technology. In 2009, he and co-founder Max Uhlenhuth established SilviaTerra, a Boston-based company that began as a graduate research project at the Yale School of Forestry and Environmental Studies.

Traditionally, foresters gather information about a forest using what they call a "timber cruise." They hike through the woods with a compass and property map and, using paper and pencil, record information on trees at regular intervals. From the representative data, they are able to assess the resources on the whole property.

New technology is beginning to make the laborious process of timber cruising easier, less expensive, and more time efficient. A growing number of foresters, therefore, are spending a little more time at the computer and a little less time on the ground.

At Yale, Parisa and his partner developed a program called Timber Scout. It uses satellites to gather data on the number, size, and species of trees on any given property. The program, Parisa says, makes it possible to create an accurate predictive model for clients based on the land's species and attributes.

After establishing Timber Scout as its "flagship" product, SilviaTerra released a timber-cruising app with the clever name Plot Hound. This app allows foresters to record data on their smartphones rather than with paper and pencil.

The two decided to apply for a patent for their programs after receiving encouragement from professors and professionals in the forest industry. Parisa

asked himself, "Why not me? Why shouldn't I grow that niche market?" That decision resulted in starting SilviaTerra, and Parisa has never looked back.

At 29, Parisa is already a successful entrepreneur. He currently works with clients across the U.S. and as far away as South America, providing forest management on over 500,000 acres.

"Companies use information to value forest assets and develop management plans to increase future value of forest (land), whether it be for a conservation agency that wants to (provide) a better habitat for salamanders or an industrial owner that wants to increase the value of the timber," Parisa said.

Despite his enthusiasm for his company and the programs he has developed, Parisa worries about those who fear that this technology might put foresters out of touch with the land they manage. However, he maintains that it would improve land management and that the results are as accurate as with traditional methods.

Much of the land in the U.S. currently goes unmanaged. But Parisa believes that the data SilviaTerra's technology provides can help foresters use and grow the resources better than traditional methods alone.

"I'm excited about not only the technology, but I'm excited about the type of decision making that (the software) can enable and positively impact," Parisa said.

It is Parisa's combination of creativity, dedication, and love of his profession that have earned him the recognition he has received lately in his industry and in news outlets such as Bloomberg and Forbes. Those same qualities are sure to continue to bring him success in years to come.





Former 4-H'er and MSU alumnus named Tree Farmer of the Year

A love for the land has been his driving force since he began his tree farm at the age of 13.

Some 61 years later, Charles Dismukes is the Mississippi Forestry Association's 2011 Outstanding Tree Farmer of the Year.

Not only has the Mississippi State University alumnus been a tree farmer, he also has been fully engaged in forestry, first working in the forest industry and then building a timber company. Along the way, Dismukes has promoted sustainable natural resources throughout the state.

What began as a 4-H project in 1951 has turned into a career for Charles and his wife, Carolyn, who live on their 1,158 acre registered tree farm in Montgomery County. Dismukes recalls the experience well.

"The 4-H club was in every school, and the Montgomery County agent, Mr. Bob Wilson, was very enthusiastic," Dismukes recalled. "He thought a forestry project would be suited for our area since we didn't farm that much."

The concept of working in forestry was not a new one for Dismukes. His father and grandfather were both loggers, and his paternal grandfather managed a saw mill.

With the help of Mississippi State Extension forester Ralph Robertson, young Dismukes developed a tree farm on 65 acres of his family's land.

His interest and knowledge of forestry grew. Dismukes won the Mississippi and national 4-H forestry project awards in 1957. A four-year scholarship from Homelite Chainsaws allowed Dismukes to turn his hobby into a rewarding career.

Upon completion of his degree in forestry, he went to work for the forestry industry. When the need for a raw material supplier near his hometown arose, Dismukes pursued his entrepreneurial spirit and started Vaiden Timber Company. His father partnered with Dismukes to begin the company, and his sons, Barry and Brian, operate the business today.

A registered forester in Mississippi and Alabama, the timber company provided Dismukes with a unique opportunity to advise landowners in the region on the need to replant after harvest.

"I have always offered to get the site work done and the trees replanted after harvest for my customers," Dismukes said. "I have even sown seed for landowners when they couldn't afford seedlings."

Regeneration is an important component of forest management. Dismukes demonstrates regeneration, thinning, and other important forest management principles on his tree farm.

Field days, short courses, and other demonstrations are often held on the property. Home schoolers, Boy Scouts, and landowners are often touring the Dismukes' tree farm.

Charles Dismukes (forestry 1961)



"I have always wanted my property to be a demonstration of forest management," Dismukes said. "I want people to understand how great a forest can be when it is properly managed."

Retired Extension professor Tim Traugott recalls the numerous opportunities he had using the Dismukes' tree farm to demonstrate forest management.

"When we planned Extension Forestry programs, all we had to do was call Charles, and he was always supportive," Traugott said. "Numerous forestry field days were held on his property."

Charles is not one to stand on the sidelines. He is active in forestry organizations and actively works with other tree farm owners, Traugott added.

"Charles is an outstanding alumni and ambassador for forestry," said George Hopper, Dean of the College of Forest Resources. "His leadership in the profession extends throughout the state."

And now, two grandsons, Garrett and Wilson, will continue the legacy begun so long ago for the Dismukes' family. Garrett is a sophomore in the university's College of Forest Resources, pursuing a degree in forestry. Wilson is also a sophomore, pursuing an agricultural engineering degree.

"I am so proud of my grandsons and their love for the land," Dismukes said. "They have been learning and working in the tree farm since they first began to walk."

Dismukes believes his grandsons will follow in his footsteps, spreading the message of sustaining our natural resources and planting trees.

"If they told me I wasn't going to live but two more weeks, I'd plant some trees before I left," Dismukes said. "If we don't do it, future generations won't have it."



Mid-South Forestry Equipment Show

The John W. Starr Memorial Forest was abuzz with the sounds of wood chippers, skidders, and other forestry equipment for two days in October. Nearly 6,000 loggers, landowners, foresters, and exhibitors gathered at the university's forest for the Mid-South Forestry Equipment Show.

The biennial event is a collaborative effort between Mississippi State University, Mississippi Forestry Association, Mississippi Loggers Association, and Hatton-Brown Publishers. Established in 1983, it is the longest-running show of its kind and one of few that offers live demonstrations of forestry equipment, thanks to Starr Forest's 8,244 acres.

This year marked a special celebration for the equipment show site and pavilion. The Mississippi Institutions of Higher Learning approved the naming of the Charles E. Burkhardt Pavilion and Site. Burkhardt served as forest supervisor and equipment show manager for 31 years until his death in 2011.

"Charles served the university with a can-do attitude during his tenure and he is greatly missed," said George Hopper, dean of the College of Forest Resources. "It is a fitting tribute to name this site, where he contributed so much of his time and energy."

Southern Region Extension Forestry Awards for Excellence

Several forestry faculty and staff took home honors from the Southern Region Extension Forestry Awards for Excellence. **Andrew Londo**, John Riggins, **Karen Brasher** and **Marc Measells** received silver for the website foresthealth.msstate.edu. **John Kushla**, **John Auel**, Gail Ballard, Tammy East, Britton Hatcher, **James Henderson**, Janet Jolley, Rein Nevins, Julie White and Elaine Write received bronze for the Forest Celebrations held throughout the state. **Don Bales** received silver for the 2011 Calendar: Two Sides of Fire. **Glenn Hughes** and **James Henderson** received gold and bronze, respectively, for publications. **Andy Londo** received silver for the Mississippi Southern Pine Beetle Prevention Program. **James Henderson**, **Stephen Dicke**, and **John Kushla** received silver for the forest growth and yield short course.

Bailey honored for service

Butch Bailey, forestry extension associate, was presented the Superior Performance Award by the Forest-Lamar County Forestry Association. The group cited Bailey's "sustained superior performance as a representative of the Mississippi State University Extension Service."

Hunt named to national board

Kevin Hunt, wildlife, fisheries and aquaculture associate professor, was recently named a member of the Board of Directors of the Recreational Boating and Fishing Foundation.

Leopold named to Boone and Crockett

Bruce Leopold, wildlife, fisheries and aquaculture department head, is now a professional member of the Boone and Crockett Club. There only 100 Regular Members and 130 Professional Members at this time.



Edwin Sun, associate forestry professor, was recognized for teaching contributions. Sun is an expert in law and policy and has been credited with turning these courses into enjoyable experiences for both undergraduate and graduate students.



Forestry professor **Steve Grado** was recognized for service contributions. Grado is a recognized scientist in multiple-use forestry and is the lead social/economic assessor for the Rainforest Alliance and serves as a certifier for the Forest Stewardship Council.



Sam Riffell, wildlife, fisheries, and aquaculture associate professor, was honored for outstanding achievement in research by the College of Forest Resources. An eight-year veteran, Riffell has garnered over 2.9 million dollars in extramural funding.

Faculty and Staff Award Winners



James Henderson (forestry 2004), assistant extension forestry professor, received the Early Career Achievement Award. A four-year veteran, Henderson was praised for his publications addressing the impact of forestry and forest products on each of Mississippi's timber-producing counties.



Associate extension/research forestry professor **John Kushla** received the Extension/Outreach Award. Kushla conducts an average of 70 programs each year for landowners and youth interested in forestry. A nine-year veteran, he has authored or coauthored over 200 publications.



Forest supervisor **Misty Booth** (forestry 1999) and forest products machinist **David Butler** were recipients of the 2011 Doris Lee Memorial Staff Awards. The awards recognize outstanding service to the department, college, and university.

Forest Landowners award MSU Extension specialist

Don Bales (forestry 1975), a senior Extension associate in MSU's College of Forest Resources and certified wildlife biologist, has been named the national Extension Forester of the Year by the Forest Landowners Association.



Bales was praised for his work in Title III educational programs, which include field days, workshops, short courses, logger education programs and youth events.

Bales has garnered nearly \$7 million in funding to support more than 1,500 educational programs in the eligible counties.

Grado named Forest Conservationist of the Year

Forestry professor Steve Grado received the Mississippi Wildlife Federation's Forest Conservationist of the Year Award.

Grado is a recognized scientist in multiple-use forestry.

He is a Fellow in the Society of American Foresters and was named George L. Switzer Professor of Forestry in 2009.

Grado has an exemplary record of advancing forestry through service to professional organizations.

Grado holds a bachelor's degree from both Villanova University and Pennsylvania State University. He also earned master's and doctoral degrees from Pennsylvania State University.



Center for Resolving Human-Wildlife Conflicts

A new center has been established in the Department of Wildlife, Fisheries and Aquaculture to conduct research, provide educational outreach to clientele and the laity, and promote undergraduate and graduate education concerning the resolution of human-wildlife conflicts.

The Center grew out of the long-standing Berryman Institute, of which MSU has been the Eastern Unit since 2003. The Eastern Unit, which was based in the university's Forest and Wildlife Research Center, became a separate organization after federal funding to Berryman was eliminated in 2008 and 2011 due to the removal of federal congressionally directed funding and earmarks.

Dr. Jerry Belant, who has worked with human-wildlife conflicts for 20 years, will provide leadership for the Center. Research conducted by the Center will address conflicts locally, nationally, and internationally. Outreach will include workshops with practical, hands-on education.

To find out more about the Center, visit the web site at www.human-wildlifeconflicts.msstate.edu.

ACCOLADES

The Natural Resources Enterprises Team received the 2011 Foil Teamwork Award. Congratulations to **wildlife, fisheries and aquaculture personnel Daryl Jones, Adam Rohnke, Adam Tullos**, and Dawn Manning.

Several faculty and staff were honored at the Mississippi Chapter of the Wildlife Society annual meeting. **Stephen C. Grado, Kevin M. Hunt, Clifford P. Hutt, Xiana T. Santos**, and **Richard M. Kaminski** received the 2011 Award for Outstanding Peer-reviewed Journal Article. **William Hamrick**, Mark Smith, Chris Jaworowski, and **Bronson Strickland** received the 2011 Award for Outstanding Technical Publication. **James Miller** received the 2011 Award for Outstanding Popular Article. **William W. Hamrick, Bronson K. Strickland** and **Ben C. West** received the 2011 Award for Outstanding Media Product (video). The video, "A Pickup Load of Pigs: The Feral Swine Pandemic," also received the Gold Award from the 2011 Southern Regional Extension Forestry Group.

Steve Dicke (forestry 1984) received the 2011 Mississippi Forestry Association Meritorious Service to Forestry Award. The award is given annually to an individual who has provided long and distinguished service to the profession of forestry in Mississippi.

Leslie Burger and **Jimmy Avery** received awards at the 2011 MSU Extension Conference. Burger received the Outstanding Extension Non-Faculty Award, and Avery received the Spirit of Excellence Award. **Burger** also received a Bronze Award in the Youth and Teacher Education Program category from the 2011 Southern Regional Extension Forestry Group for the Youth Summer Camps. She also was selected as the Outstanding Non-Faculty Professional Woman from the MSU President's Commission on the Status of Women.

Burger, Tegt named Educators of the Year

Wildlife, fisheries and aquaculture extension personnel have been named Educators of the Year by the Mississippi Wildlife Federation.



Leslie Burger (left) and **Jessica Tegt** (wildlife, fisheries and aquaculture 2011) received the honor, in part, for their work with Starkville Schools in the Youth Environmental Science, or YES! program.

YES! invites teachers to bring their students to a six-room series of thematically designed rooms or laboratories for a week of intensive science instruction. One day consists of a field trip, either to the Noxubee National Wildlife Refuge or the Plymouth Bluff Center. The remaining four days are spent studying ecology, ornithology, forestry or forest products, earth science, and humans and the environment.

New books by CFR authors

Wildlife, fisheries and aquaculture professor Don Jackson has released his second book, **"Wilder Ways."** In **Wilder Ways**, Jackson takes readers on a journey into the deep and very personal connections that can develop between people and wild places while hunting, fishing, and rambling across landscapes.

A new publication designed to assist both landowners and scientists in managing moist-soil wetland plants is the work of wildlife, fisheries and aquaculture graduate students Heath Hagy, Sarah Fleming, Joshua Cheshier, James Callicutt and postdoctoral research associate Michael Schummer. **"A Guide to Moist-soil Wetland Plants of the Mississippi Alluvial Valley"** is a 600-page resource which covers more than 100 moist-soil wetland plants found in the Mississippi Alluvial Valley and elsewhere.





BBC team films catfish, toads in a visit to MSU



Catfish and toads drew two British Broadcasting Corporation film crews and host to spend three days with Mississippi State University experts.

The crew was shooting an upcoming BBC documentary called "Wonders of Life" with host Brian Cox. It will follow Cox's successful "Wonders of the Solar System" and "Wonders of the Universe," viewed by millions of people in the United Kingdom and around the world last year.

Don Jackson, Sharp Professor of Fisheries, took the crews on the Big Black River near Durant for three days of catfish fishing. Jeanne Jones (wildlife and fisheries 1982, 1995), a professor of wildlife ecology and management, spent two days with the crews showing them Mississippi Fowler and American toads in MSU's Starr Memorial Forest and Noxubee National Wildlife Refuge.

"The BBC team was interested in the diversity of life that exists in our Southeastern wetlands and streams," Jackson said. "They were specifically interested in the way animals live in environments that are alien to human beings, like turbid streams, backwater areas, and wetlands."

Outdoor Channel uses MSU's BuckScore tool

Mississippi State University's BuckScore software is now the official scoring system for the Outdoor Channel.

BuckScore is a software package that uses digital images to estimate the age and antler score of white-tailed deer. Developed by scientists in the university's Forest and Wildlife Research Center and Extension Service, MSU licensed the product in 2010 to NBFog, a Texas-based company focused on outdoor business.

Developed as a management tool for landowners and biologists, BuckScore can be used to estimate the deer population accurately. The patent-pending software uses physical features and statistically-driven models to estimate the antler size and age of photographed deer.

BuckScore is the newest in a line of products developed by MSU's Deer Ecology and Management Lab.

"BuckScore is the result of more than 30 years of research on white-tailed deer," said Steve Demarais, professor of wildlife ecology and management and co-developer of the BuckScore brand. "Prior to its development, we studied the variation in antler size and body size based on geographic region and antler trait heritability."

The BuckScore brand includes the name, website, intellectual property and software. The software and intellectual property were developed by **Demarais** (wildlife and fisheries 1979, 1984); associate Extension professor of wildlife ecology and management **Bronson Strickland** (wildlife and fisheries 2005); and graduate student **Jeremy Flinn** (wildlife, fisheries and aquaculture 2010), who now manages BuckScore for NBFog.

To purchase the BuckScore software, visit www.buckscore.com.



Above: Each year in October, some 4,000 students, teachers, and parents converge on the MSU campus to attend the **Wood Magic Science Fair**.

Right: There are **two summer camps** available each year for students 10 through 18. Check our website for details.



Natural Resources Summer Camp



Wildlife, Fisheries & Aquaculture Summer Camp



REACH

Agricultural production and natural resource conservation go hand-in-hand, and a Mississippi State University scientist is committed to proving how this works, one farm at a time.

Robbie Kroger, assistant professor of aquatic sciences in wildlife, fisheries and aquaculture, is the co-founder for a new statewide initiative called Research and Education to Advance Conservation and Habitat (REACH).

REACH experts share scientifically researched best practices with producers and landowners. Over time, as farmers develop and implement landscape stewardship plans, REACH will collect a unique body of research data that will show the benefits of conservation management in ag production.

The REACH program is a collaboration between MSU's Extension Service, Mississippi Agricultural and Forestry Experiment Station, the Forest and Wildlife Research Center, and numerous state, federal, and private organizations.



Golf pro, forestry leader collaborate to benefit MSU golf course

When the head of Mississippi State's Institute of Golf needed the right trees to improve playability and course safety, he had only to travel a short distance to the university's College of Forest Resources.

Tony Luczak, a Professional Golfers Association member who has directed the golf institute for four years, said he knew additional trees would add aesthetic value, as well as various practical benefits to the 18-hole, par-72 facility. After reaching out to Andrew Ezell, forestry department head, the two began creating a vision for the course's tree-lined future.

The golf course now is home to 2,200 newly planted trees. Weyerhaeuser and Plum Creek Timber companies each donated 1,000 loblolly pine seedlings, while Joshua Timberlands Nursery donated 200 green ash seedlings. Members of the student chapter of the Society of American Foresters planted them over a recent two-day period.

"Students want to give something back to the university and show their devotion by contributing some type of service," Ezell said.

With organized crews and hardworking forestry students, they planted all 2,200 trees, and they will be able to come back to this university long after their graduation and say, "I helped plant those trees," Ezell added.

MSU student forestry group named best in nation

Mississippi State's student chapter of the Society of American Foresters is once again the best in the nation. The chapter competed with 75 chapters nationally for the recognition. This is not the first national championship win for the 28-member organization, placing in the top three over the last 11 years. Led by MSU associate forestry professor **Robert Grala**, the chapter is judged on service to members, the community, and the forestry program, among other criteria. Grala notes that service is one of the key components in the chapter's goals.

MSU student named marine policy fellow

Wildlife, fisheries and aquaculture doctoral student **Clifford P. Hutt** has been selected to participate in the highly competitive John A. Knauss Marine Policy Fellowship. He will spend a year in a legislative or executive office in Washington, D.C. to learn firsthand about federal policies impacting domestic waterways, including ocean, coast and Great Lakes resources. Since the fellowship program's inception in 1979, Hutt is the first MSU student selected to participate.

Students Raise Money for Relay for Life

Wildlife, Fisheries and Aquaculture graduate students cooked wild game and fish to raise money for Relay for Life. The students sold the goods during campus activities and raised nearly \$1500.

ACCOLADES

Graduate students **Amy Spencer-Alford** and **Rebecca Krogman** received the Skinner Memorial Award at the American Fisheries Society annual meeting. The pair are both graduate students in wildlife, fisheries and aquaculture.

Graduate students in wildlife, fisheries and aquaculture swept the 2012 Mississippi Water Resources Conference. **Caroline Andrews** took first place for her poster while **Alex Littlejohn** took second place.

Wildlife, fisheries and aquaculture graduate student **Kristin Biondi** received a Graduate Research Award from the Transportation Research Board of the National Academies. Kristin will receive a research stipend as part of the Graduate Research Award Program

on Public-Sector Aviation Issues for the 2011-2012 academic year. This award is sponsored by the Federal Aviation Administration of the U.S. Department of Transportation and administered by the Airport Cooperative Research Program of the Transportation Research Board/National Academies.

Wildlife, fisheries and aquaculture senior **Chris Cooley** received the MSU Spirit of State Award.

Wildlife, fisheries and aquaculture students swept the Mississippi Chapter of the American Fisheries Society annual meeting. All were honored for outstanding papers with **Rebecca Krogman** placing first, **Jonathan Fleming** placing second, and **Michael Sherman** placing third.

Forestry graduate student **Cody Rainer** took third place for his poster at the Southern Hardwood Forestry Research Group meeting.

Mike Sherman and **Jonathan Fleming** were honored for outstanding papers at the Mid-South Aquatic Plant Management Society's Annual Meeting. Both are wildlife, fisheries and aquaculture students.

Wildlife, fisheries and aquaculture graduate students **Jacob Straub** and **Adrian Monroe** received top prizes at the 2011 Annual Meeting of the Mississippi Chapter of the Wildlife Society. Straub received outstanding student presentation while Monroe received outstanding student poster.



Left: Forestry student **Kelvin Banks** examines a board made of kenaf and corn stover that can be pressed into numerous products.

Above: Wildlife, fisheries and aquaculture students **Eric Michel** (left) and **Jake Oates** take measurements of a newborn fawn.

Irby joins MFA as communications coordinator

Nathan Edward Irby (forest products 2006, 2008) began work in February as Mississippi Forestry Association's communications coordinator. Nate joins MFA after serving as the marketing and public relations manager for the American Wood Protection Association (AWPA) in Birmingham. Nate is also currently finishing a Ph.D. from North Carolina State University, where he spent three years teaching classes and performing cooperative extension outreach for the state.



Cushing receives Young Forester Award

Tamara L. Cushing (forestry 1999) received the Young Forester Leadership Award, one of seven national awards from the Society of American Foresters. Cushing is an assistant professor and extension forestry specialist in forest economics and business at Clemson University.



The Young Forester Leadership Award recognizes outstanding leadership by a young forestry professional in the development and promotion of an individual program or project, or for a sustained leadership role benefiting the practice of forestry and SAF.



Godwin honored for dedication to bobwhite quail restoration

Mississippi Department of Wildlife, Fisheries and Parks Wild Turkey/Small Game Program Coordinator and MSU alumnus **Dave Godwin** (wild-life and fisheries 1991) walked away with the National Bobwhite Technical Committee's annual award for "outstanding efforts and contributions" to the conservation and management of bobwhite quail—and a standing ovation—at the committee's annual meeting in Tallahassee, Florida.

The NBTC is comprised of the fish and wildlife agencies of the 25-state core range of the bobwhite quail, various research institutions, and private conservation groups. It is the parent entity of the National Bobwhite Conservation Initiative, the unified strategy to restore wild quail on a national, range-wide level.

Multiple nominations of Godwin, widely known as "Mississippi's Small Game Hunting Ambassador," cited his historic support for bobwhite restoration on the national, regional, and state levels.

Godwin was also cited for helping make small game and bobwhite conservation a priority in his own home state of Mississippi, including creating the position of statewide quail coordinator, launching the state's first-ever private lands habitat development program, completing the state's first statewide strategic quail plan, and establishing quail management demonstrations on state wildlife management areas.



Matt Gray (wildlife and fisheries 1995) received the T. J. Whatley Distinguished Young Scientist Award from the University of Tennessee. He also received UT's Chancellor's Award for Professional Promise in Research and Creative Achievement. Gray is an associate professor in the Department of Forestry, Wildlife and Fisheries, University of Tennessee-Knoxville. Gray and wife Debra Miller (wildlife and fisheries 1987) recently were blessed with their first child, Ethan. Pictured is Dr. Bruce Leopold (forestry 1979), head of wildlife, fisheries and aquaculture, discussing careers in wildlife with Ethan.

MSU alumnus honored for conservation work



Forest products alumnus Jay Stokes was recently honored as a Field and Stream Magazine Hero of Conservation. The honor recognizes individuals who are involved in a hunting- and/or fishing-related conservation project that is well under way with outstanding results.

Stokes and fellow alum Justin Wilkes began Break-Away Outdoors, a foundation which provides unique outdoor adventures for children who have never been hunting or fishing.

The non-profit organization is supported by the Mississippi Department of Wildlife, Fisheries and Parks.



Three MSU forestry alums recently visited another MSU forestry grad in Colorado and took in a field trip in Silverton, Colorado. Pictured from left to right are **Phil Seymer** (forestry 1976), **Austin Shelby** (forestry 2008), **Les Shelby** (forestry 1976) and **Brian Maier** (forestry 1983). The quartet toured the Silverton Lumber Company and historic Mayflower Mine Mill and visited old mines now being closed by the Bureau of Mines. Austin works for the Colorado State Forest Service (Montrose District).

1950s

Donald S. Bell (forestry 1956) retired in 1999. He has been married to his wife Billie Jo for 55 years. He enjoys fishing, hunting, camping, and spending time with his seven grandchildren.

George L. Pace (forestry 1957) has retired and likes to garden and tend to his timberland. He and wife Kathryn live in Nashville, North Carolina.

John Derks (forestry 1958) retired from Green Bay Packaging in 1998 after 24 years. He enjoys fishing and hunting and lives with his wife Patsy Ann in Morrellton, Arkansas.

1960s

Cary Williams (forestry 1962) has retired from the National Forest Service and moved to Columbia. He is currently doing part-time consulting work. He is an active member of the Lions Club, SAF, Marion County Forestry Association, and the Mississippi Forestry Association.

Richard Marsalis (forestry 1963) is retired and managing his 30 acres of pine and mixed hardwood. He enjoys gardening and lives in Ashland.

Lewis Kearney (forestry 1965) is still active in training and assists with teaching FEMA classes in Texas and Illinois. He is employed by a company in Maryland for FEMA-related work. He responds to wildland fires, principally in Texas.

Archie Tate (forestry 1965) retired from Weyerhaeuser with over 41 years of service. He is now a full-time shrimper and lives in Bogalusa, Louisiana.

Bill Dansby (forestry 1967) retired after 40 years of service to Weyerhaeuser Company. He lives in Philadelphia, Mississippi.

Harold Anderson (forestry 1969) is enjoying semi-retirement. He still works with Mississippi Project Learning Tree and volunteers with the Mississippi Forestry Association. He enjoys gardening and woodworking.

John V. Bass (forestry 1969) has visited all 50 states in the nation. He most enjoyed visiting all of the major National Parks. He resides in Mexico Beach, Florida.

1970s

Jim Thorsen (forestry 1970) has retired from the U.S. Forest Service and now owns a consulting business, Forest Resources Consultant. He enjoys working with small landowners and urban forestry in Eustis, Florida.

Danny Knight (forestry 1971) retired as procurement forester for Kitchens Brothers Manufacturing Company. He is currently a part-time consulting forester and also works on his tree farm.

Glenn Seefeld (forestry 1971) received his master of divinity in 1986. He is in the Mississippi Conference of the United Methodist Church and is the pastor at Greenwood First and Valley Hill in Greenwood, Mississippi.

David Killebrew (forestry 1972) retired from the USDA Forest Service and lives in Mesa, Arizona.

Thomas M. "Marq" Webb Jr. (forestry 1972) retired from the USDA Forest Service in 2007. He works occasionally as a FEMA Disaster Assistance Employee and on wildfire detail.

Charles Patrick Bergin (forestry 1975) retired from International Paper after 33 years. He is currently in real estate/land sales with Legacy Land Agency. All four of his children have graduated from Mississippi State. He has six grandchildren.

David B. Cook (forestry 1975, forest products 1978) works as an industrial engineer with the U.S. Army. He volunteers at the Mercury and Chase Railroad and lives in Huntsville, Alabama.

Rollin Turnage (forestry 1975) retired from Southern Lumber Company. He enjoys his six grandchildren, hunting and traveling. He lives in Smithville, Mississippi.

Carl Mason (forestry 1976, wildlife and fisheries 1982) has retired and works on his tree farm in Union. He is also serving as a Neshoba County Soil and Water Conservation Commissioner.

Stephen M. Butler (forestry 1977, 1980) was named Trustee of The Nature Conservancy, Mississippi Chapter.

Kenneth H. Real (forestry 1977) is the Chairman of Commissioners for the Alabama Forestry Commission.

Jim Shepard (forestry 1979, 1985) is serving as Dean of the School of Forestry and Wildlife Sciences at Auburn University.

1980s

Brian Reed (forestry 1980) works for Zilkha Biomass Fuels. He lives in Columbus, Mississippi.

Mary Beth Nickolich (forestry 1983) is an area forester for Weyerhaeuser Company. She recently celebrated 20 years with the company.

Kathy Lunceford (wildlife and fisheries 1986) now has an office in Thompson Hall as the fish and wildlife biologist with ecological services, U.S. Fish and Wildlife Service. Her specialty is natural resources landscape management and compliance with the Endangered Species Act for federal and state projects in NE Mississippi.

James Cummins (wildlife and fisheries 1987) was elected to the Board of Directors of the Boone and Crockett Club. He also is one of "The 100" Regular Members of B&C, a stipulation by Theodore Roosevelt when he started the Club 124 years ago.

1990s

Keith Lannom (forestry 1990, 1992) is the forest supervisor on the Payette National Forest in McCall, Idaho.

Thomas McCabe (forestry 1995) has worked for the U.S. Army Corps of Engineers for over 17 years. He and wife Courtney live in El Dorado, Kansas with their four children.

Cathy Shropshire (wildlife and fisheries 1996) received the 2011 Award for Outstanding Popular Article by the Mississippi Chapter of The Wildlife Society. The award was in recognition for her work as editor of Mississippi Wildlife, the publication of the Mississippi Wildlife Federation.

J. Brian Davis (wildlife and fisheries 1998, 2001) is working as an assistant professor in wildlife, fisheries and aquaculture at Mississippi State University.

Rick Hamrick (wildlife and fisheries 1999) is a wildlife biologist for the Mississippi Department of Wildlife, Fisheries and Parks.

Gayden Pollan (wildlife and fisheries 1999) develops and manages a 10,000 acre ranch for wildlife and cattle in Northwest Oklahoma. He is active in his community, serving as a volunteer fireman and treasurer of the Rodeo Club and taking children from the Baptist Boys Ranch on hunting and fishing trips.

2000s

Timothy C. Knight (forestry 2000, 2003) is the District Ranger for the Devil's Garden/Warner Mountain Ranger District of the Modoc National Forest in California. He is a frequent contributor to the Woodworker's Journal and a photographer.

Ryan Ramsey (forestry 2000) started his own consulting business, Forest South LLC., in Brandon, Mississippi.

Jessica Smith (forestry 2000, 2004) is working as a registered nurse on the live transplant unit. She lives in Coldwater, Mississippi.

Sabrina Clark Chandler (wildlife and fisheries 2003, 2007) was named the special assistant to the director of the U.S. Fish and Wildlife Service. Chandler will be working directly with the director and deputy directors on day-to-day issues as well as supervising the Controlled Correspondence Unit. Her official governmental title is Fish and Wildlife Administrator. Chandler will be working out of the Main Interior Building in Downtown Washington, D.C.

Jeremy Clay (wildlife and fisheries 2004) is an attorney for Baker Donelson in Jackson. He and his wife have two children, Audrey and Caroline.

Lindsey Singleton (wildlife and fisheries 2004, 2008) is working for the Natural Resources Conservation Service as a soil conservationist.

Dr. Josh Stafford (wildlife and fisheries 2004) received the Doug Wilcox Award for Outstanding Associate Editor for the journal Wetlands.

Chris Green (forestry 2005) works as a consulting forester in his family's business, Woodland Technologies. He and wife Amy live in Winona, Mississippi.

Ali Brown Carnes (wildlife, fisheries and aquaculture 2010) is working on her master's in instructional technology from the University of Memphis. She and husband Adam live in Pontotoc, Mississippi.

Jeremy and Emily Flinn (wildlife, fisheries and aquaculture 2010) are the proud parents of Carter Cade Flinn, born March 20, 2012.



Dr. Jodi Roberts (forestry 2011) is the new officer for the Institutional Review Board for the Protection of Human Subjects in Research at Mississippi State University.

IN MEMORY

Larry Melvin Clanton (forestry 1969) died September 22, 2011. Clanton was a graduate of Eupora High School, Class of 1964, and a graduate of MSU School of Forest Resources in 1969. He served as County Forester for Webster, Calhoun, and Montgomery Counties and as MS Forestry Commission's NW District Management Forester, 1969-1979. He then left forestry behind to pursue his dream of farming, and so began Clanton Farms. Clanton Farms grew cotton, corn, soybeans, and peanuts. He also had cattle, stocked ponds and grew pine forests. He was Webster County's Young Farmer of the Year 1981, 2008 Conservationist of the Year for Webster County Development Council for his innovations in no-till cultivation and other farming practices, past president of Webster County Farm Bureau, FSA County Chairman, and County Commissioner for NRCS.

Richard Wayne Jones (forestry 1974) died April 30, 2011. Jones was Regional Woodland Manager for Packaging Corporation of America in Counce, Tennessee. He was a member of the National Guard. Jones was also a member of Center Hill Baptist Church and Tennessee Forestry Association.

Charles E. Burkhardt (forestry 1980) died September 9, 2011 at his residence in Starkville, MS. Friend, forester, father, and founder of the Mid-South Forestry Equipment Show are just a few of the roles Burkhardt filled during his lifetime. For those who had the opportunity to know and work with Burkhardt, his friendship is the role which preceded all others. Burkhardt graduated from Mississippi State University in 1980 and began working as forest supervisor for the university. The Mid-South Forestry Equipment Show was conceived in the early 1980s, and Burkhardt spearheaded the first exposition, which was held on the John W. Starr Memorial Forest in 1986. He initiated the idea of a pavilion and coordinated its construction in 2003.

Lt. Colonel Michael Gregory Cranston (forestry 1992) died March 29, 2012 in Alabama. Mike was born in Crossett, Arkansas on March 30, 1964. He grew up in Greenville, MS and graduated in 1982 from St. Joseph High School. In 1986 he earned a Bachelor of Science degree at Delta State University, where he was a member of Pi Kappa Alpha Fraternity. He received his Master of Forestry degree and a Master of Business Administration degree in 1992 from Mississippi State University. He was a long term member of the Air National Guard, proudly serving his country from 1987 to the present. He volunteered to serve two tours of duty in Kuwait. Mike was employed at International Paper from 1992-2011 and was a member of the Society of American Foresters, the Louisiana, Mississippi, and Texas Forestry Associations, The Mississippi Board of Registered Foresters, the National Guard Association of Mississippi, the National Guard Association of the United States, and the USA Triathlon Association. Mike was a licensed pilot who loved outdoor activities such as hunting, fishing, kayaking, and bicycling. He was a loving husband, father, son, brother, and friend. He was much beloved by his friends and family.

Kevin Lee Kimbrough (forestry 2009) died December 22, 2010. He was a forester and an avid hunter and fisherman. He was a 2009 graduate of Mississippi State University. He was a member of Woodville Heights Baptist Church in Jackson.

As part of the College of Forest Resources newsletter, the alumni updates help keep us all connected. Let us know about you, your careers and family so we can let your friends and classmates keep up with you. Send an e-mail to kbrasher@cfr.msstate.edu or complete the form on the CFR website at www.cfr.msstate.edu/alumni/update.asp.

The MSU CFR Alumni Society would like to thank everyone who submitted their 2012 dues. We will continually strive to use your funding wisely and for the best interest of our students and alumni.

MISSISSIPPI STATE UNIVERSITY™

College of Forest Resources
Box 9680
Mississippi State, MS 39762

Nonprofit Organization
U.S. Postage
PAID
Mississippi State, Mississippi
Permit No. 81

